



비례밸브

Proportional Valve

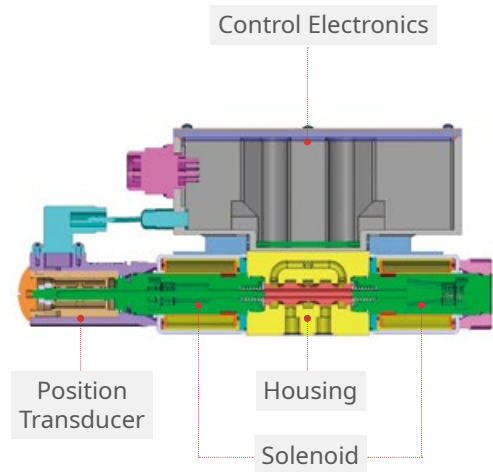
Flow Control,
with Integrated Electronics



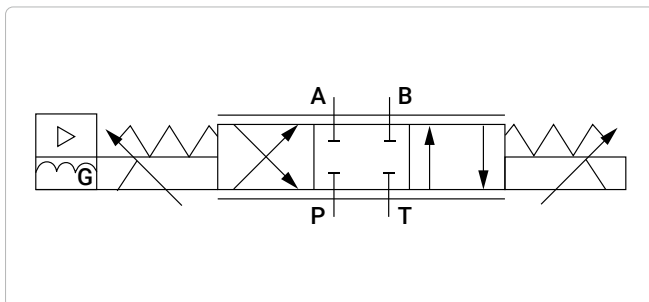
기술제원 Technical Data

Max. Operating Pressure (bar)	Port P, A, B	350
	Port T	210
Nominal Flow @ ΔP=10bar (lpm)		32
Max. Permissible Flow (lpm)		80
Pressure Fluid Temperature Range (°C)		-20 ~ +80 (preferably +40 ~ +50)
Hysteresis (%)		≤ 0.5
Reversal Span (%)		≤ 0.5
Response Sensitivity (%)		≤ 0.1
Nominal Supply Voltage (VDC)		24
Command Voltage Input (VDC)		±10
Weight (kg)		2.5
Mounting Pattern		ISO 4401-03-02-0-05

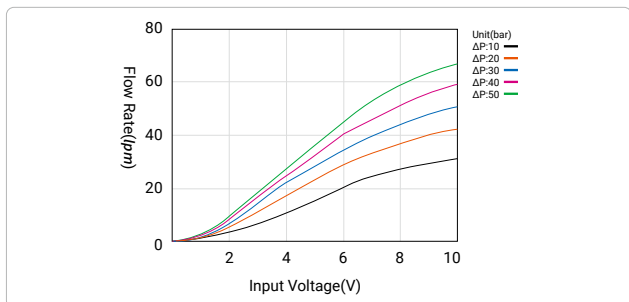
단면도 Cross Section



유압기호 및 시험 그래프 Graphic Symbol and Test Graph



Graphic Symbol



Flow Characteristic Curve